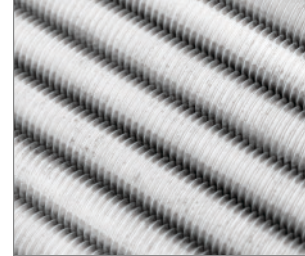


## R-GUN Manual extrusion gun for 380 ml cartridges

Professional dispensing system for resin anchors in cartridges



### Product information

#### Features and benefits

- Manual operation - no need for external power supply
- Type of gun used for anchoring strictly depends on the type of cartridge
- Fast and effortless resin injection
- Convenient dispensing tool for a range of situations
- Robust design for all jobsite conditions

#### Applications

- Dosing of bonded resins and other mediums from coaxial 380-410 ml cartridges.
- Manual operation - no need for external power supply
- For use in a wide range of fastening applications in concrete and solid masonry structures

### Installation guide



1. Open the cartridge and attach the proper nozzle.
2. Put the cartridge into the gun thoroughly.
3. Make sure that the nozzle is in correct position and lies in the fence.
4. By pressing the trigger dose the required amount of the product.
5. After finished work empty the gun and clean if necessary.

## Product information

Product Code	Description	Suitable for
	-	-
R-GUN-380-N	380 ml CARTRIDGE GUN	For 380ml coaxial cartridges only.

## Product commercial data

Product Code	Description	Suitable for	Quantity [pcs]			Weight [kg]			Bar Codes
			Box	Outer	Pallet	Box	Outer	Pallet	
R-GUN-380-N	380 ml CARTRIDGE GUN	For 380ml coaxial cartridges only.	12	12	240	12.4	12.4	277.2	